



CCC (Underwater Engineering) S.A.L

DSCV Wadad Aletheia

Vessel Specifications



CCC (Underwater Engineering) S.A.L.
Mussaffah Industrial Area,
St. No. 7, Corniche Road,
CCC Yard Building 15,
Abu Dhabi, United Arab Emirates
www.cccuwe.net



DP3 and DP Enhanced Reliability (ER) equates to maximum flexibility when considering operational requirements

Vessel Notations

DNV Class GL :

+1A1, ICE-1C, DSV-SAT, DSV-SURFACE,
DYNPOS AUTRO, DYNPOS ER, EO, SF,
DK(+), COMF V(3) C(3), BIS, FiFi II, BWM-T,
NAUT-OSV(A), SUPPLY VESSEL (Hull Only),

HELDK-SH(CAA-N), RECYCLABLE,
OFFSHORE SERVICE VESSEL +, CLEAN DESIGN, SPS 2008 and
Compliance with MODU Code and MOU Regulations

**Vessel Particulars:**

Type:	Ice Class Dive Support Vessel
Year of Production:	2024
Builder:	ZPMC
Flag:	Bahamas
LOA	145.90m
Beam:	27.00m
Depth:	11.30m
Draught:	7.65m (max)
Deadweight:	8,650 tonnes
Max. Design Speed:	14.5 knots
Eco. Speed:	11.5 knots
Endurance:	60 days
Active Roll Reduction:	2 x Active Roll Reduction Tanks Installed (HOPPE)
Station Keeping:	ERN 99.99.99.99

Vessel Deck:

Working Deck:	65m x 27m
Working Deck Area:	1,850m ²
Deck Strength:	15t/m ²
Deck Load:	5,000t @ 1m
Transom Strengthened to:	50t/m ²
Working Moonpool:	7.2m x 7.2m strengthend for vertical tower system, 50t/m ²

Vessel Capacities:

Fuel Oil:	2,300m ²
Fresh Water:	1,120m ³
Water Makers:	2 x 40m ³ / day RO units

Vessel Fi Fi II System (FFS):

- 2 x Remote control monitors
- 2 x 3,600m³/hr

Vessel Helideck:

Diameter:	28.75m
MTOW:	15.6t (S61/S92/EH101)
Compliance:	UK CAA, NMD, DNV and CAP437
Helicopter Reception:	Above wheelhouse

Vessel Wheelhouse:

- 1 x S-Band and 1 x X-Band type (chart radar)
- 2 x ECIDS units
- 2 x GPS units (in addition to DP)
- 1 x Autopilot
- 1 x Speed log
- 1 x Echo sounder (3,000m)
- 1 x GMDSS (A3)
- 1 x Navtex ICS Nav 5
- 1 x AIS
- 1 x Ship security system
- 1 x Voyage data recorder
- 1 x Bridge navigation watch alarm system

Vessel Kongsberg DP System:

- Main DP – K Pos DP-22 (+K Master and K Chief)
- Alternative DP – K Pos DP-12
- Emg Back Up – K Pos DP-12
- 1 x SIMRAD cJoy
- 2 x cWing Fixed Bridge wings

Vessel DP Reference Systems:

- 3 x DGNSS
- 1 x Radius
- 1 x CyScan
- 2 x Taut Wire
- 1 x Kongsberg HiPAP 501 & 1 x Sonardyne Ranger 2 Pro (2 x Spare HiPAP Trunks)
- 4 x Wind Sensors
- 4 x Gyro Compass
- 4 x MRU's



Vessel Redundancy Features:

- Fire and Flood protection throughout, arranged as two redundant groups.
- SIEMENS Dual In-feed concept incorporated on Fwd, Aft tunnel thrusters and center Aft propulsion thruster.
- Full SIEMENS Emergency Shut Down (ESD) system installed complete with Gas detection and automatic fire dampers specifically designed for DSCVs.
- All power, control cabling and piping routed independently, and A-60 segregated throughout vessel.
- Provision of an independent emergency fire back-up control station, A-60 insulated, below the wheelhouse, facing Aft.
- DYNPOS ER also considers "Hidden Failures: and incorporates secondary monitoring and control systems on the main power plant.
- Full DYNPOS ER application. Allows for off-line generators to be taken into account under DP Consequence Analysis for power requirement criteria.
- Alternative Full DP control system located as Aft bridge console.
- Built for Live Short Circuit Testing proving Voltage Dip Ride Through capability and safe operation with the main Bus tie closed and dual feeding.

Vessel Power & Propulsion:

Diesel Electric Propulsion of:	<ul style="list-style-type: none"> 6 x MAK 2,700kWe, 6.6kV, 3Ph, 60Hz 1 x CAT Emg/Harbour Set 860kWe 1 x CAT Dive Emg Gen Set 860kWe <p>Complete with SIEMENS Dual In-Feed Concept</p>
SCHOTTEL Propulsion Thrusters:	<ul style="list-style-type: none"> 3 x 3,000kW, Fixed pitch, Variable Speed Fully Azimuthing Thrusters AFT
BRUNVOL Bow Retractable Thruster:	<ul style="list-style-type: none"> 1 x 2,500kW, Fixed Pitch, Variable Speed Fully Azimuthing Retractable Thruster FWD
SCHOTTEL Tunnel Thrusters:	<ul style="list-style-type: none"> 2 x 2,680kW, Fixed Pitch, Variable Speed Tunnel Thrusters FWD

Vessel Cranes:

Full HOPPE anti-heeling system Installed	
MacGregor 400t Offshore Rated Knuckle Boom Crane	<ul style="list-style-type: none"> 400t single fall @18m AHC/AT main hoist winch 20t single fall / 40t double fall with AHC/AT aux hoist winch Both with working operating depths of 3,000m (single fall) DNV GL Classed
MacGregor 25t Offshore Rated Knuckle Boom Crane	<ul style="list-style-type: none"> 25t single fall with AHC/AT hoist winch Working operating depth of 600m DNV GL Classed
MacGregor 10t Offshore Rated Telescopic Crane (Pt side)	<ul style="list-style-type: none"> 10t @ 15m, 1t @ 35m main hoist winch 1t @ 15m, 1t @ 35m aux hoist winch DNV GL Classed
MacGregor 10t Offshore Rated Luffing Crane (Stbd side)	<ul style="list-style-type: none"> 10t @ 15m, 1t @ 35m main hoist winch DNV GL Classed

Vessel Accommodation & Recreational Facilities:

- POB of 200 persons meeting MLC 2006 regulations, all with en-suite
- Cabins:
 - 20 x Single cabins
 - 8 x Double cabins
 - 41 x Two plus Two (Pullman Bunks)
- Fully air-conditioned meeting DNV GL COMF Class C(3) V(3) (Carrier)
- Galley and Provision stores for 200
- Mess room seating for abt. 80
- Full Hospital with separate treatment room facilities
- 2 x Recreational rooms
- 1 x Cinema
- 1 x Internet Café
- 1 x Gymnasium



Vessel Offices:

- 3 x Large client offices with windows Aft
 - 1 x Survey area on bridge
 - 1 x Large conference room
 - 2 x Separate ROV Office spaces
-

Classed Saturation Diving System:

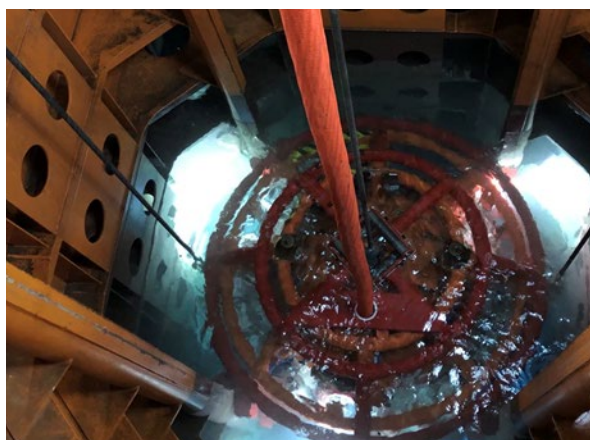
- DRASS i100, 24man, Fully automated diving system
 - Full NORSOK capabilities / DNV Classed to 300MSW
 - 2 x Dedicated bell moonpools – 5.4m x 4.2m (1 x Pt. and 1 x Stbd.)
 - High efficiency diver and chamber gas reclaim system
 - Total gas storage of approx. 40,600Nm³
 - Dedicated diving emergency bell mate trunk on main deck
 - Designed for a significant wave height of 5.5m with heave compensation
 - 2 x 24 Man self-propelled hyperbaric Lifeboats (SPHL)
-

Classed Surface Diving Spread:

- DRASS 3 Diver Air/Nitrox surface diving spread (Pt side)
 - 2 x Dedicated A-frame LARS (1 x main and 1 x standby diver)
 - 1 x Dedicated A-Frame tooling LARS (with 2 x CT and 1 x standard winch)
 - 1 x Dedicated triple drum winch (for hose deployment)
 - Hoop diving facilities prepared for operating 33m from ship side
-

ROV Hangers:

- MacGregor ROV hanger doors
 - Fully equipped to supply all services to 2 x A-Frame ROV LARS
 - 1 x ROV control room, 2 x ROV offices, ROV stores and workshop facilities
 - 5 tonne gantry crane
-



Diving Bell Launch and Recovery



Saturation Dive Control



Saturation Diving Chambers

