



CCC (Underwater Engineering) S.A.L.



COMPANY PROFILE

Company Profile – Contents

1 Company Introduction

2 Company Management System & HSE

3 Company Services

4 Company Resources

5 Client List



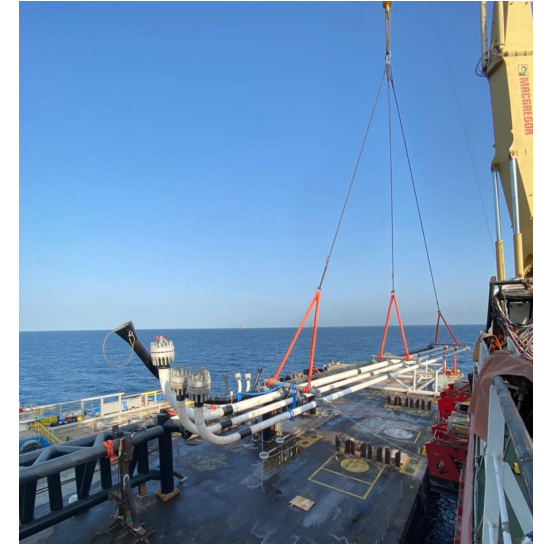
Company Profile

About Us

CCC (Underwater Engineering) S.A.L was established in 1976. Formed initially as a commercial diving company operating in the Arabian Gulf, CCC(UE) has evolved since 2000 into an offshore construction company providing enhanced services covering **worldwide operations**. The company ethos has been to recognize client needs and determinedly develop quality products and services to fulfil these requirements. This "client satisfaction" driven approach has guided the company to its successful performance over the years in a continuously challenging market keeping it the leader in its field of operations.

CCC (UE) now enjoys a proud reputation of almost half a century in the offshore sector of the industry. The strong reputation that CCC (UE) has earned over the years is due to combining the experience, expertise, high quality of services and products provided to our clients, in addition to maintaining the highest international standards of health, safety, quality and environmental protection during any type of performed operation.

From CCC (UE)'s diving contractor roots providing air diving services in the oil field, the company has expanded its roles to include charter of DP2 marine vessels, saturation diving, ROV inspection/observation/construction works.



CCC (Underwater Engineering) S.A.L.



Company Profile

About Us - Continued

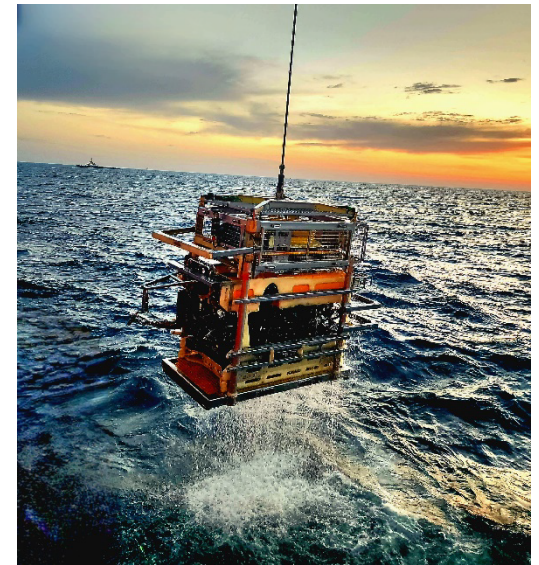
Additionally CCC (UE) has expanded its line of business to include the installation of subsea tie-ins, risers, boat landings, SBM's, inspection, repair, maintenance of offshore subsea assets (I.R.M.) like flexible pipelines/umbilical's and cables.

Today, the majority of the business lines conducted by CCC (UE) are undertaken utilising its owned and operated assets.

In 2013, CCC (UE) took delivery of two new build 65 metre DP2 DSV vessels: CCC MARITIME 1 and CCC MARITIME 2, then in 2018 this was followed with the delivery of the 93.6 metre new build vessel DP2 DSV "SAID ALETHEIA". In Q2 2024 CCC (UE) will receive here newest vessel, the DP3 DCSV "WADAD ALETHEIA".

CCC (UE) is based in the United Arab Emirates and operates from a large yard facility providing all the support services to our fleet of equipment and marine vessels. The yard, which also accommodates all stores, workshops, maintenance facilities and fabrication yard has a jetty on the Mussafah Channel, three hours from the open sea (Arabian Gulf).

In summary CCC (UE) is a proven company of international repute capable of worldwide operations.



CCC (Underwater Engineering) S.A.L.



Company Profile – Contents

1 Company Introduction

2 **Company Management System & HSE**

3 Company Services

4 Company Resources

5 Client List



CCC (Underwater Engineering) S.A.L.



Company Profile

CCC (Underwater Engineering) S.A.L. is committed to achieving a Quality product and customer satisfaction by providing the best possible Marine, Diving and Remote Operating Vehicle (ROV) services that meet international standards.

CCC (UWE) complies with the requirements of the following international standards to effectively manage and control its Quality, Health, Safety and Environment (QHSE) obligations:

- ISO 9001:2015 – Quality Management Systems
- ISO 14001:2015 – Environmental Management Systems
- ISO 45001:2018 – Occupational Health and Safety Management Systems
- IMCA Guidelines – Marine, Diving, Remote Systems & ROV and Offshore Survey

CCC(UE) Management has successfully implemented an integrated management system, based on the principles of quality management, which have worldwide acceptance and are applied in all kinds of production and service industries.



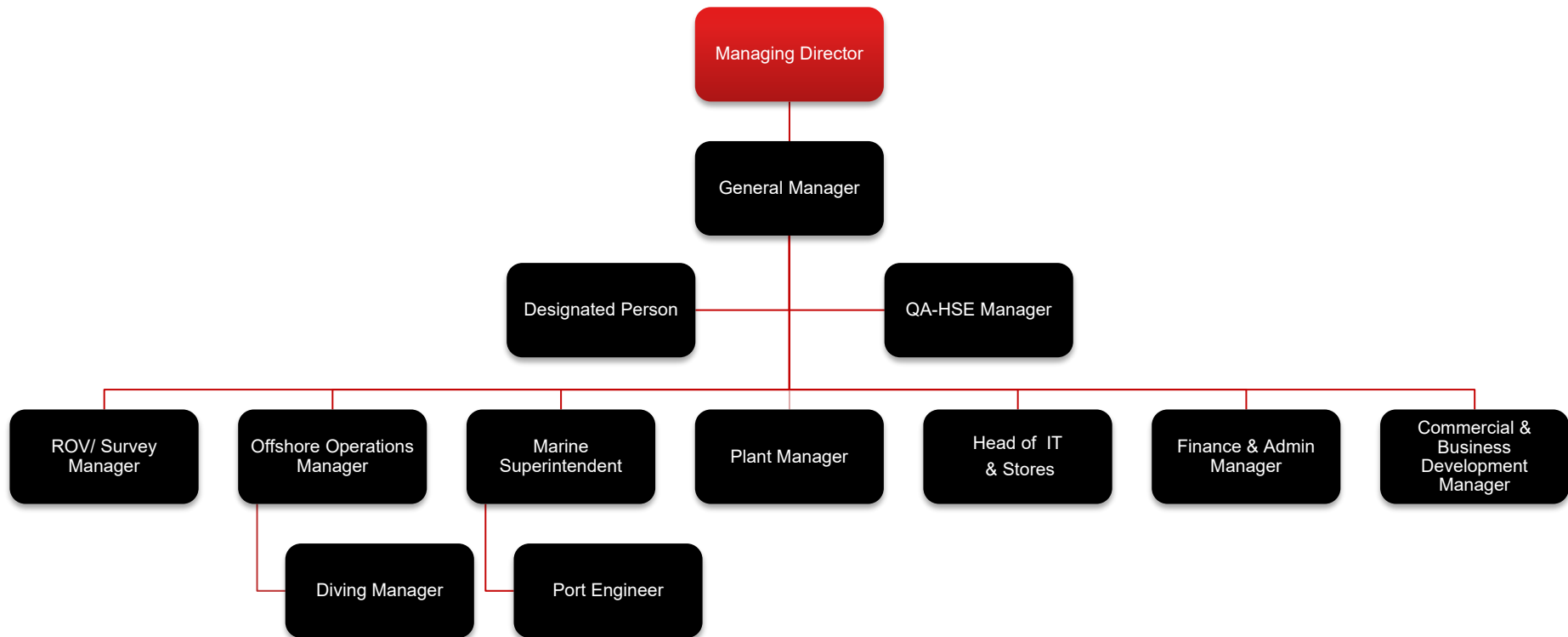
CCC (Underwater Engineering) S.A.L.

ISO 9001
ISO 14001
ISO 45001
BUREAU VERITAS
Certification



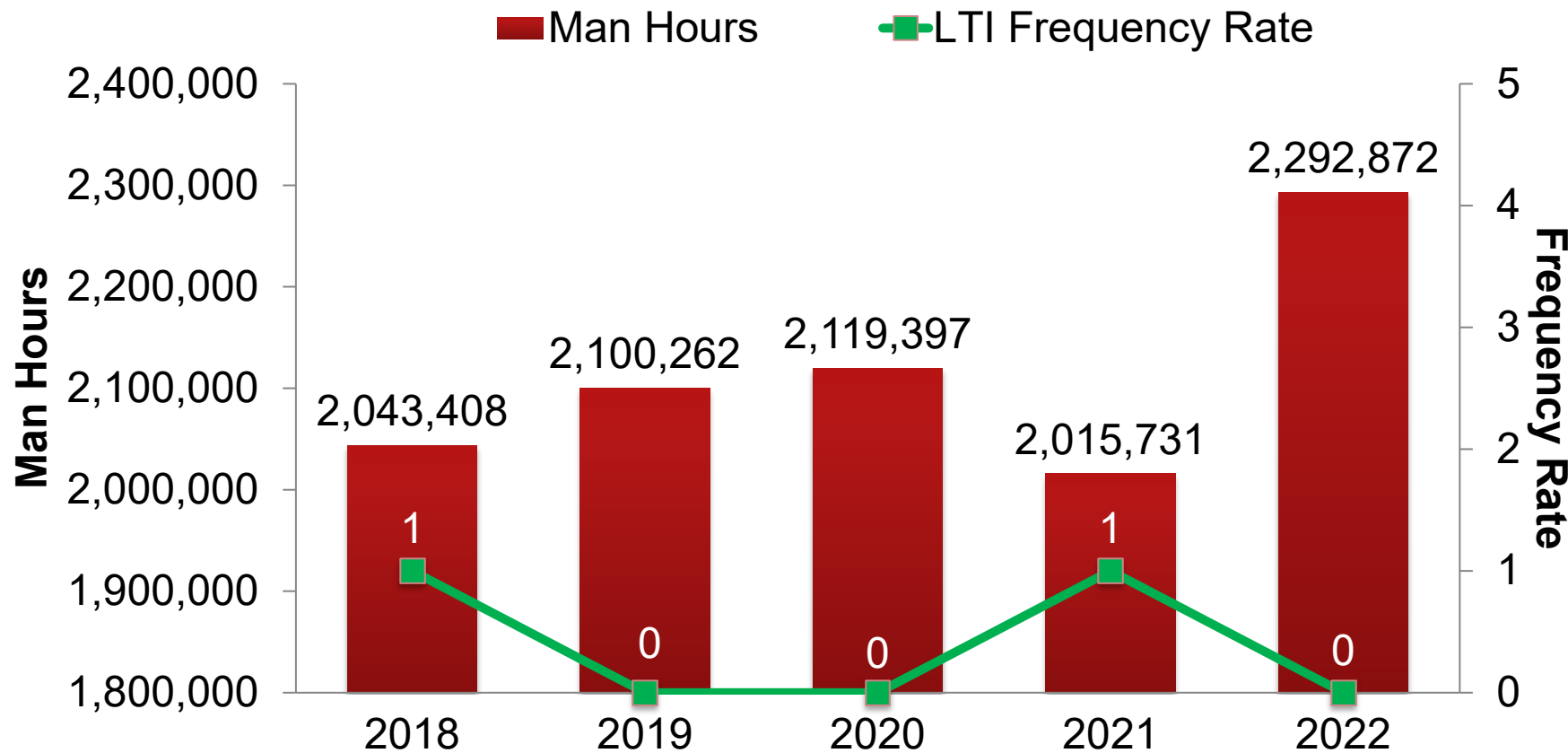
Company Profile

Company Organisation Structure



Company Profile

Man Hours Worked in Relation to Lost Time Incident Frequency Rate



Company Profile – Contents

1 Company Introduction

2 Company Management System & HSE

3 **Company Services**

4 Company Resources

5 Client List



CCC (Underwater Engineering) S.A.L.



Company Services

OFFSHORE CONSTRUCTION

REMOTELY OPERATED VEHICLE SERVICES

PIPELINE INSPECTIONS

GROUTING OPERATIONS

MARINE SERVICES

PROJECT MANAGEMENT

FLEXIBLE LAYING

COMMERCIAL DIVING SERVICES

CABLE LAYING

AIR DIVING

SURVEY POSITIONING

PLATFORM INSPECTIONS

I.R.M. SERVICES

ROV

MIXED GAS DIVING

ROCK DUMPING

SATURATION DIVING



CCC (Underwater Engineering) S.A.L.



Company Services

EPC Contractor Support

CCC (UE) has a diverse business model which benefits our EPC clients, by providing options for either an individual services (i.e. diving, ROV, vessel charter, cable laying, etc.) or a complete solution where CCC (UE) will undertake a complete scope using company owned and operated equipment.

The scopes in which CCC (UE) support EPC clients during the life of an offshore project include, but are not limited to:

- Project mobilisation and readiness
- Pre-Lay surveys (ROV & Divers)
- Pre-Lay Support/stabilisation installation operations (i.e. Sleepers and mattresses)
- Subsea installation operations (inclusive of risers, J-Tubes, subsea clamps, spool tie-ins, etc.
- Subsea rectification operations (inclusive of free span corrections, grout bag installation, mattress installation.
- ROV As-Laid and As-Built surveys



Company Services - Subsea Installations Operations

Valve Skids and Tie-In's

CCC-UWE completed installation of a 1,000 plus, corridor and close-out spools for different clients in different regions. CCC-UWE provides clients different options which ever is more efficient & economical to deliver spools on barges / supply vessel or getting it wet stored pre arrival of the DSV.

Spool sizes were from 4" to 48". Spool lengths up to 82 meters long. Spools longer than 45 meters were lifted from cargo barge by two cranes.



CCC (Underwater Engineering) S.A.L.



Company Services - Subsea Installations Operations

J-Tube, Risers & Clamps

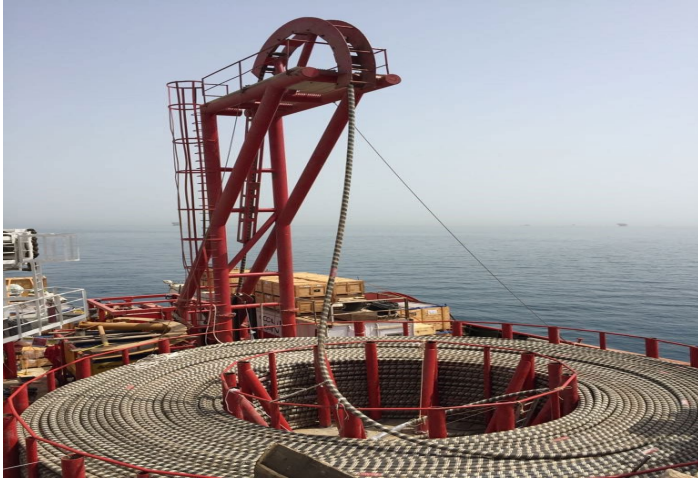
CCC-UWE provides design, fabrication & construction services for J-tubes, Risers and their associated clamps. CCC-UWE have successfully installed a variety of different sizes and lengths of J-tubes and Risers in shallow and deep water (WD: 8 m to 80 m) .

CCC-UWE also gives options to client to install J-tubes / Risers in a single section or set of flanged sections. Moreover, with a availability of two cranes on CCC-UWE vessels, client is no more required to mobilize barges with big crane capacity to install long / heavy risers.

CCC-UWE gives client options to install set of Risers & J-tubes up to 70 meters long in a single bundle.



Company Services - Subsea Infrastructure Installation



Cable, Umbilicals and Flexible Pipelines

CCC UWE has highly experienced specialized engineers with various spread of equipment to provide clients services for submarine cable, umbilical and flexible installation, testing, termination, repair and maintenance (IRM).

With our expansive fleet of equipment and experienced back deck personnel we can offer various methods for cable / flexible handling, laying and installation, either by collection on to a reel which will be installed on a skid and driven by either Hub drive or Under Rollers (Reel weight up to 1000 tonnes).

Alternatively, transpool submarine cables on to a turn table / fixed basket on vessel's deck.



CCC (Underwater Engineering) S.A.L.



Company Services - Subsea Infrastructure Installation

Transpooling Operations

CCC-UWE has yard space, facilities, equipment and personnel to undertake cable transpooling operations either at a client defined location or the CCC-UWE Jetty.



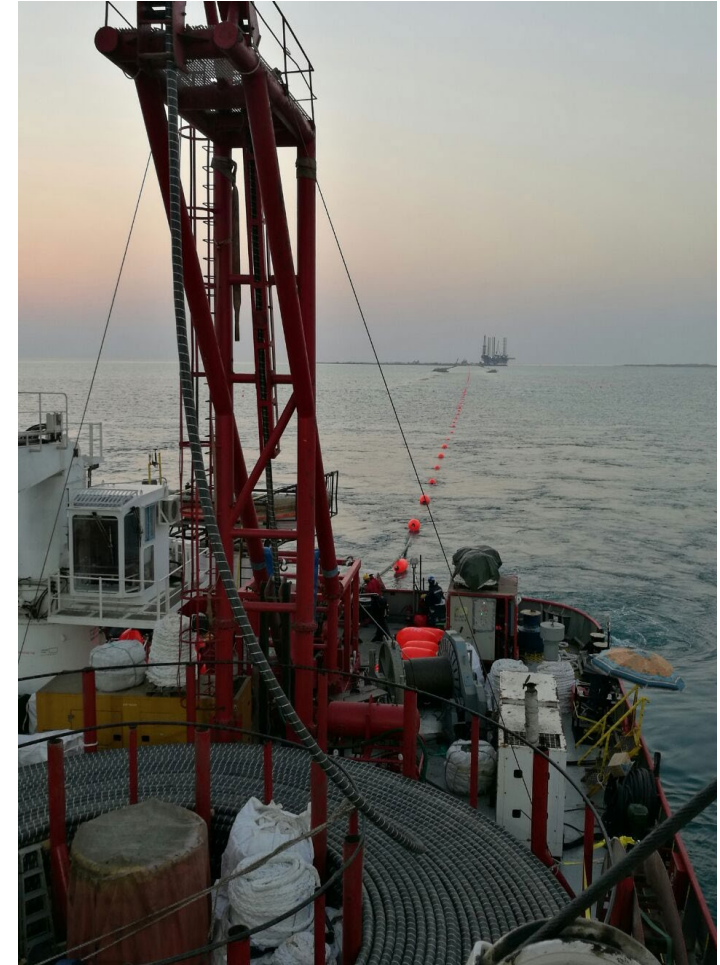
CCC (Underwater Engineering) S.A.L.



Company Services - Subsea Infrastructure Installation

Shore Pulling Operations

Moreover, CCC- UWE provides cable / flexible shore pull services to lay & install cables / flexibles from onshore to offshore or between two Islands.



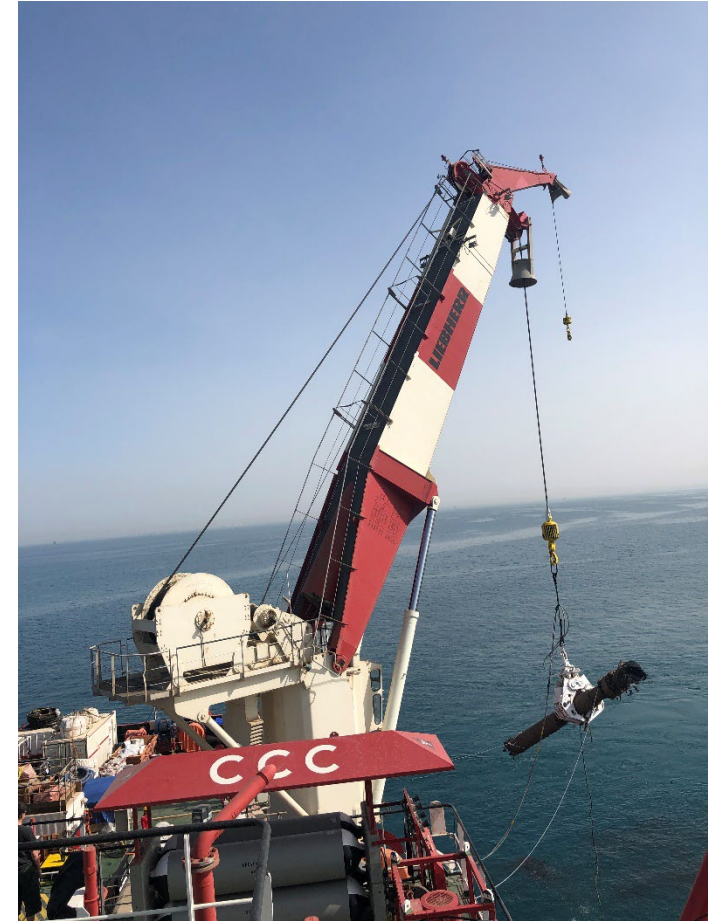
CCC (Underwater Engineering) S.A.L.



Company Services – Various Offshore Operations

Additional Services

- Pipeline / Riser demolition and recovery
- Pipeline repair
- Pipeline Pre-commissioning & Hydro testing
- SPM installation
- Hook up & topside services.



Company Services – Subsea Intervention Operations



Concrete Sleeper Installation

CCC (UE) has the ability and experience with the installation of concrete sleepers ranging between 10Te and 75Te. Installation operations can be performed using either ROV or divers from CCC (UE) owned and operated vessels.

Concrete sleepers are generally installed prior to pipe lay operations for existing crossings along the design route.

Concrete Mattress Installation

In addition to grouting operations CCC (UE) also has the capabilities to install link-lock mattresses onto existing subsea infrastructure to provide stability as well as projection.

CCC (UE), owns and operates deployment frames for link-lock mattresses, which can be operated using either ROV or divers.



Company Services – Subsea Intervention Operations



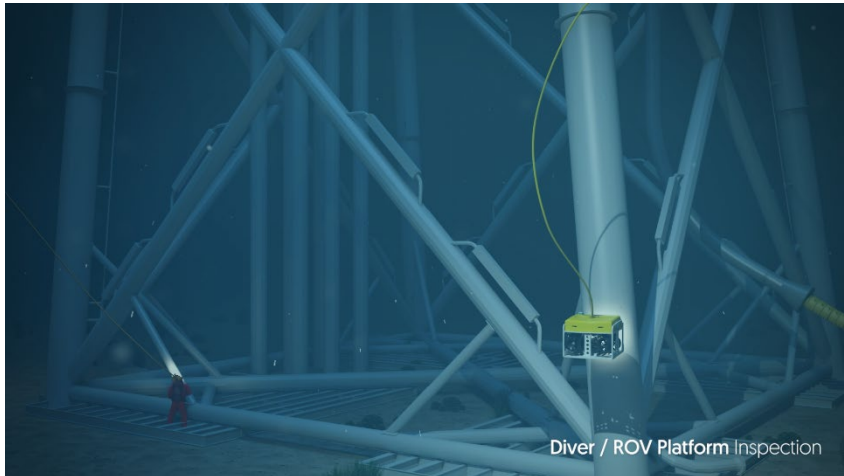
Grouting Equipment

CCC (UE) owns and operates several complete spreads to undertake grouting operations to support a number of subsea activities including, but not limited to:

- Free span correction utilizing grout bags or mattresses.
- Pipeline stability utilizing mattresses.



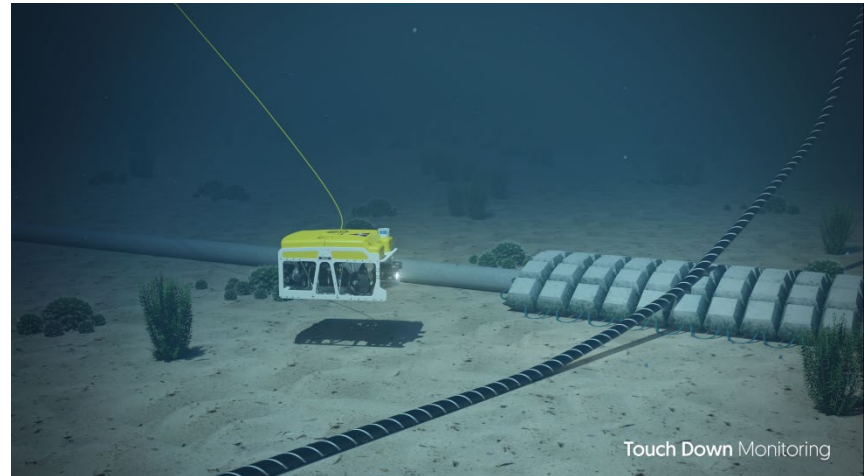
Company Services – Offshore Survey Operations



Survey Services

CCC (UE) currently operates a number of survey equipment to provide both surface and sub-surface positioning for offshore related operations, in addition to inspection, touchdown monitoring, As-laid and As-built survey services related to either new or existing cables, pipelines and platforms.

All inspection operations are undertaken utilizing digital recording technologies, in so, providing the client with all the information recorded in a synchronized viewer on external hard drive.



CCC (Underwater Engineering) S.A.L.



Company Profile – Contents

1 Company Introduction

2 Company Management System & HSE

3 Company Services

4 **Company Resources**

5 Client List



CCC (Underwater Engineering) S.A.L.



Company Resources

Marine Vessels



CCC Pioneer

- ABS Classed, 83.5 m DP-2 (SPS) Multipurpose Support Vessel.
- Year of Build – 2005
- Accommodation for 112 pax + divers in Saturation.
- Offshore 75 & 30 Ton Cranes.
- 650 m² clear deck space.



CCC Maritime 1

- ABS Classed 65 m DP-2 (SPS) Construction Support Vessel.
- Year of Build – 2012 / 2013.
- Accommodation for 76 pax.
- Offshore 30 Ton Crane.
- ~360 m² clear deck space.



CCC Maritime 2

- ABS Classed 65 m DP-2 (SPS) Construction Support Vessel.
- Year of Build – 2012 / 2013.
- Accommodation for 76 pax.
- Offshore 30 Ton Crane.
- ~360 m² clear deck space.



Company Resources

Marine Vessels



Said Aletheia

- ABS Classed, 93.6 m DP-2 (SPS) Offshore Diving Support Vessel.
- Year of Build – 2018.
- Accommodation for 149 pax.
- ABS Classed 12 Man Saturation Diving system, with SPHL.
- Offshore 150 & 50 Ton Cranes.
- ~ 800 m² working deck space.

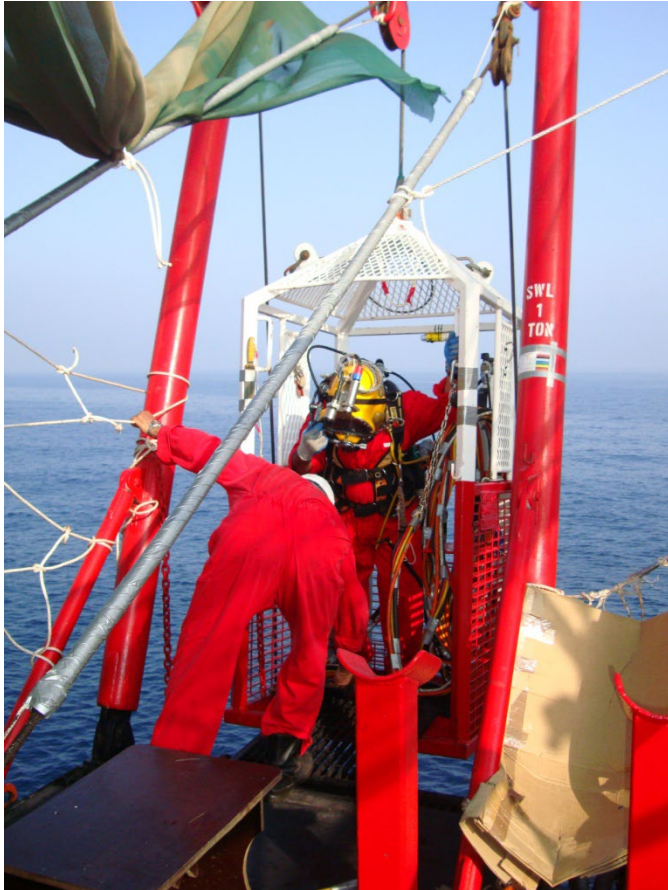


Wadad Aletheia

- Ice Class Dive Support Vessel
- DNV Classed, 145.9 m DP-3 and DP Enhanced Reliability (ER).
- Year of Build – 2024.
- Accommodation for 200 pax.
- DRASS i100 DNV Classed 24 Man Saturation Diving system, with 2 x SPHL.
- MacGregor 400 Ton & 25 Ton Offshore rated Cranes.
- ~ 1,850m² working deck space.



Company Resources



Commercial Diving – Air Diving

Air diving equipment to cover 20 operational spreads. Each system typically consists of:

- Containerized Deck Decompression Chamber.
- Diver control panel and diver communication system with back up HP/LP air compressors suitable for job requirements.
- 'A' frame winch and basket systems for diver recovery.
- SCUBA replacement package (i.e. Rigged Inflatable boat with diving equipment).
- Portable air dive station if required.
- High Pressure air and oxygen storage.
- Complete back up spares for all critical equipment .



CCC (Underwater Engineering) S.A.L.



Company Resources



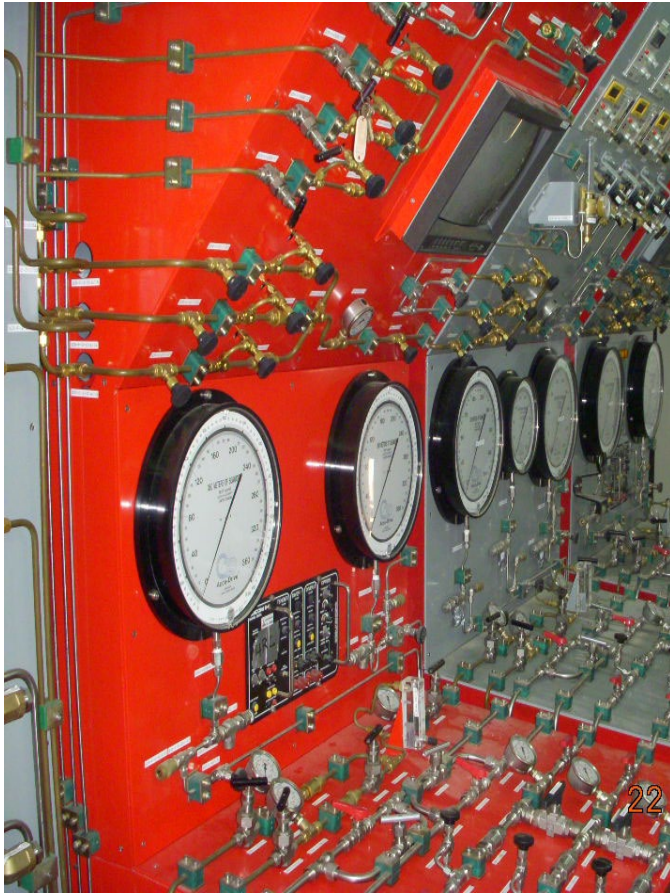
Commercial Diving – Mixed Gas Diving

CCC currently owns and operates a Mixed Gas Diving system. The Diver Wet bell System comprises the following main equipment and is clearly specified within this technical specification.

- Skid Base and A - Frame handling system.
- Winches and Hydraulic Power pack.
- Open bottom diving Wet bell with Acrylic hexagonal dome with onboard life support gas and communications systems.
- Fixed wet bell hydraulic control on the skid, portable electrical main switchboard and alarm panel. The system requires only main and standby electrical power and external gas supply to be fully operational.



Company Resources



Commercial Diving – Saturation Diving

CCC currently owns and operates several saturation diving systems. All systems are modular and can be configured to match client requirements. All systems come complete with Diver Gas Reclaim and HRC or SPHL.

- SAT IV – 6 Man Saturation Diving System (200 m Depth Rating).
- SAT V – 12 Man ABS Classed Saturation Diving System (200 m Depth Rating), with 3-man bell.
- SAT VI – 12 Man ABS Classed Saturation Diving System (200 m Depth Rating), with 3-man bell
- SAT VII – 12 Man ABS Classed Saturation Diving System (300 m Depth Rating), with 3-man bell



Company Resources

Remotely Operated Vehicles (ROV's)



Observation Class

- 2 x Seaeye Lynx



Inspection Class

- 1 x Seaeye Panther
- 1 x Seaeye Cougar XTi



Work Class

- 1 x Triton XLS 150 HP
- 2 x Seaeye Leopard
- 2 x Seaeye Panther-XT Plus



Company Resources

Hard Ground Trencher



SMD – BT500

- Year of Build: 2018
- Weight: 30 Tons
- L: 9.4m x W: 6.3m x H: 5.8m
- Trenching depth to 1.2m (Heavy duty rock cutting wheel)
- Trenching operations upto 30MPa compressive strength.
- Product diameter: 10-180mm
- Maximum operating water depth: 1,000m



CCC (Underwater Engineering) S.A.L.



Company Resources

Mutli-Reel Drive System (MRD)



RHD – 500Te

- Year of Build: 2023
- Weight: 90 Tons
- 2 x Towers, VFD driven, capable of handling
- 500Te reel gross weight capabilities.
- Reel sizes upto 12.4m standard COFLEXIP reels.
- Capable of accommodating up three 12.4m reels.



CCC (Underwater Engineering) S.A.L.



Company Resources



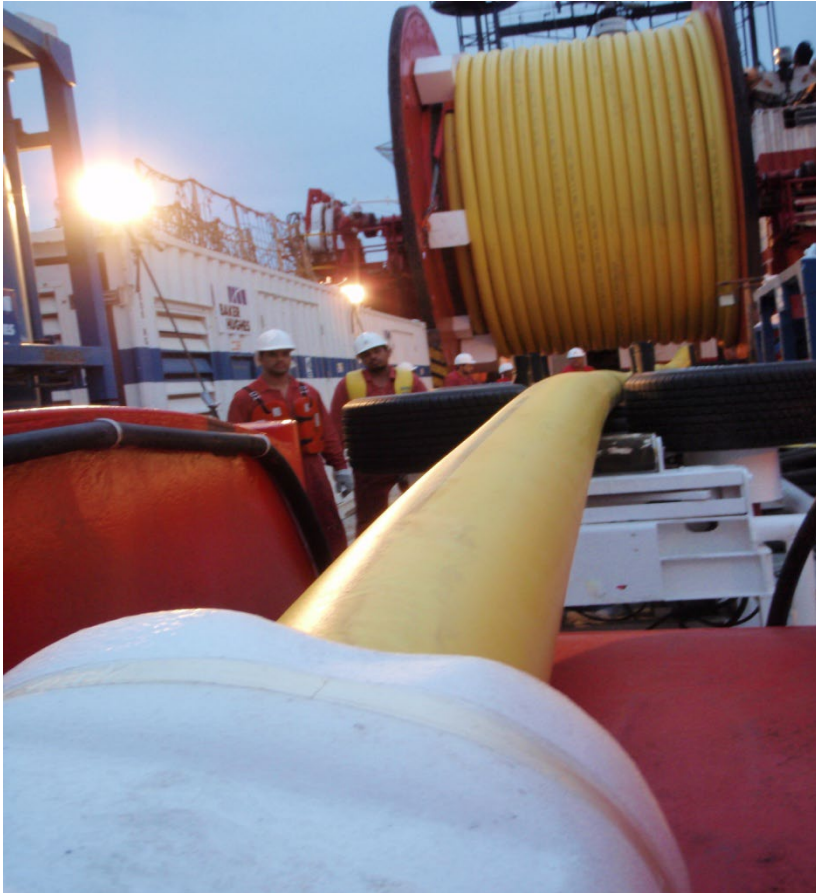
Cable/Flexible Laying Equipment

CCC (UE) owns and operates a complete spread to undertake cable/flexible laying operations, these being:

- 1 x 20 Ton (Two Track) Tensioner.
- 2 x 5 Ton (Two Track) Tensioner.
- 2 x 10 Ton Cable Bow Engines
- 2 Pair Linear Cable Engine (Hydraulically Operated).
- 4 Pair Linear Cable Engine (Hydraulically Operated).
- Cable Powered Sheave (Hydraulically Operated).
- 2 x 12.2m Diameter Turn Table (Capacity 750 Tons).
- Set of powered under rollers (Each with a capacity 175 Tons).
- Set of powered under rollers (Each with a capacity 250 Tons).
- Bend Restrictor, Semicircle (Half Moon).
- Bend Restrictor, Quadrant (Quarter Moon).



Company Resources



Flexible Laying Equipment

CCC (UE) owns and operates a complete spread to undertake flexible pipeline laying operations, these being:

- Drive Skid.
- Drive Winches.
- Hydraulic Power Pack.
- 5 Ton Cable Tensioner (2 Tracks)
- 4 Pair Linear Cable Engine (Hydraulically Operated).
- Flexible Stern Chute.
- Assorted rollers stands and chutes.



CCC (Underwater Engineering) S.A.L.



Company Profile – Contents

1 Company Introduction

2 Company Management System & HSE

3 Company Services

4 Company Resources

5 Client List



CCC (Underwater Engineering) S.A.L.



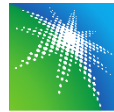
Company Client Listing

Below illustrates a number of the clients which CCC (Underwater Engineering) S.A.L. has undertaken projects for over the last seven years:



أدنوك
ADNOC

أرامكو السعودية
saudi aramco



MCDERMOTT



subsea 7



CCC (Underwater Engineering) S.A.L.



End of Presentation

CCC (Underwater Engineering) S.A.L.

P.O. Box 38522, Abu Dhabi, United Arab Emirates

Tel.: +971 2 6154100, Fax: +971 2 5553641

Email: estimation@cccuwe.net

www.cccuwe.net



CCC (Underwater Engineering) S.A.L.

